

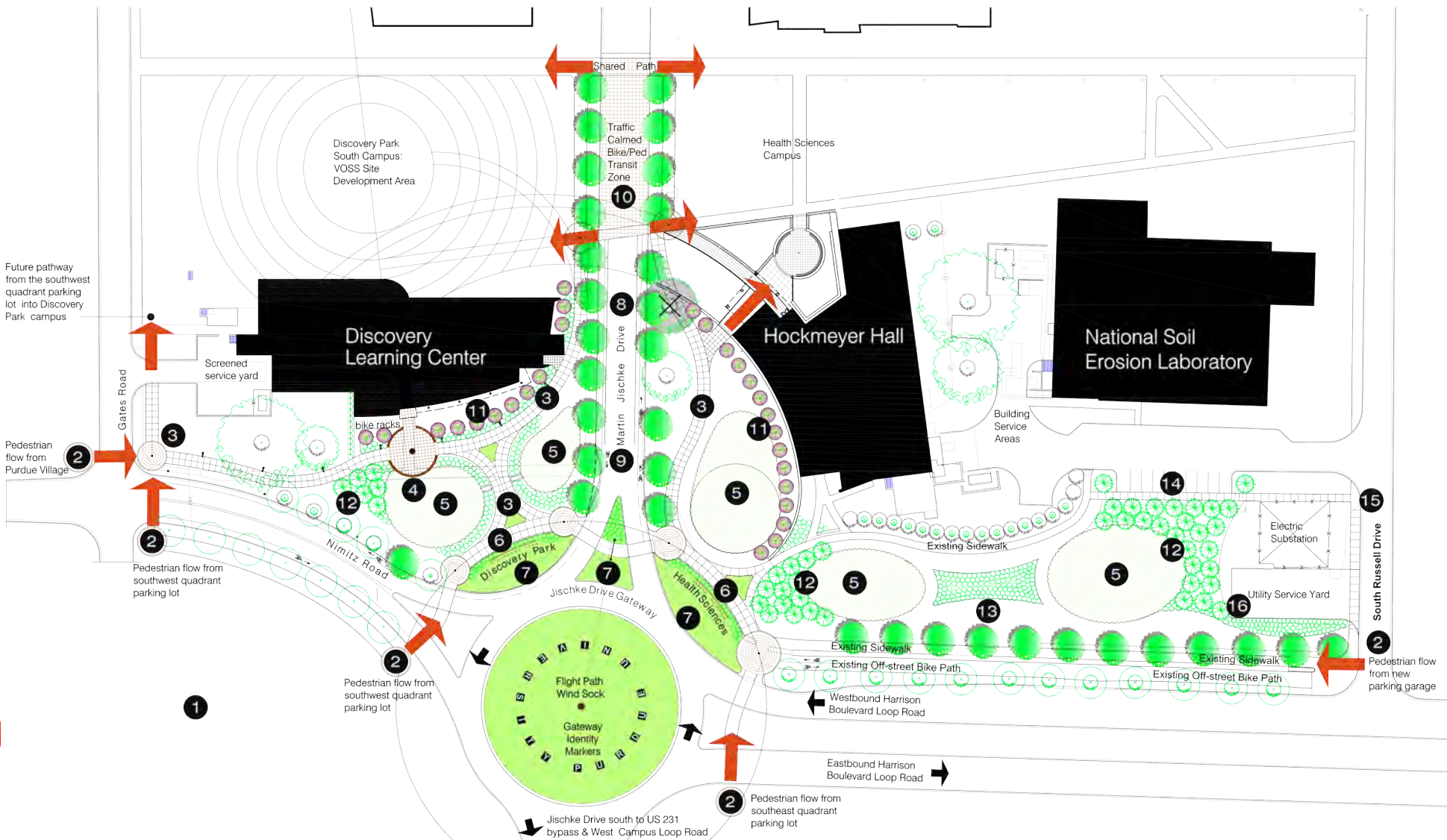


# DISCOVERY PARK SOUTH GATEWAY

Discovery Park is an interdisciplinary research park located on Purdue University's West Lafayette campus. Established in 2001 with donations from the State of Indiana and the Lilly Endowment, Discovery Park has developed into a nationally renowned research and learning complex of eight discipline-based centers representing a combined investment approaching \$1 billion.

Storrow Kinsella Associates prepared site development plans for its Hockmeyer Hall of Structural Biology in 2009. In 2012 the firm was commissioned to prepare master plan, design and construction documents for consolidating Hockmeyer Hall and the Hall for Discovery Learning Research sites into a new Discovery Park South Gateway entrance to the overall campus. The qualifications-based consultant selection process stipulated that the selected designer have professional licensure in the State of Indiana.

The landscape architect's role was to establish a master plan for the gateway area that reconciled pedestrian, bicycle and vehicular traffic conflicts anticipated at completion of a major highway leading to the gateway, drainage issues at this end-point of the overall campus storm drainage system, and the need for an experiential sense of arrival into Discovery Park from the new road and from its linked parking facilities. The master plan guided the firm's detailed design, construction documents and construction observation through the \$1 million project's completion in 2014.



- 1 Organizing & Identity element: The Harrison/Jischke roundabout as the south gateway to campus
- 2 Pedestrian generators and origins of the overall site's desire lines toward multiple campus destinations
- 3 10' wide pedestrian path network based on nudged desire lines and translated to a sweeping "Fibonacci" curvilinearity
- 4 DLC entry plaza gathering place with low brick seat wall edge, on a rise that overlooks a BMP/meadow
- 5 Stormwater BMP swales/depressions and meadow planting; positioned as future roof drain collection points
- 6 Bicycle/pedestrian shared path with crosswalk nodes for mode-merging and access to bike lanes or sharrows
- 7 Gateway identity signage landscape plaza for Jischke Drive and Discovery Park/Health Sciences campus areas
- 8 Jischke Drive street trees and lighting extension; edge planting provides guidance to crosswalk zones
- 9 Jischke Drive transition from on-street parking to bike lanes for improved mobility and gateway character
- 10 Jischke Drive traffic-calmed zone for transit stops and bicycle/pedestrian crossings between east and west malls
- 11 Native flowering tree line reinforces the counterpoint of the arced facades and completes their Fibonacci curve set
- 12 Bald Cypress groves relate to adjacent meadow ecology while framing key facades and buffering service areas
- 13 Rehabilitation of demolition site soils and planting for an arboretum/garden along the Harrison Boulevard campus edge
- 14 Service and ADA parking resource for Soils lab and Hockmeyer; completion of sidewalk to South Russell Drive
- 15 South Russell Drive edge restoration and sidewalk at electrical substation; rollover curb for walk definition at service yard
- 16 Electrical substation and service yard screening to extend campus character along Harrison Boulevard



9/19/13  
FINAL

**Discovery Learning Center looking North- Aerial View**  
Discovery Park Site Development Phase VII  
Purdue ID 1228

**2**



ska

9/19/13  
FINAL

**Discover Learning Center - Aerial view looking south**  
Discovery Park Site Development Phase VII  
Purdue ID 1228

3



Martin Jischke Drive

ska

Looking west from Hockmeyer Hall crosswalk to Discovery Learning Center

Discovery Park Site Development Phase VII

Purdue ID 1228

9/19/13  
FINAL

4



9/19/13  
FINAL

**Discover Learning Center Entry Plaza**  
Discovery Park Site Development Phase VII  
Purdue ID 1228

**5**



Martin Jischke Drive

ska



9/19/13  
FINAL

**Hockmeyer Hall - Aerial View looking Northeast**  
Discovery Park Site Development Phase VII  
Purdue ID 1228





9/19/13  
FINAL

**Discover Learning Center looking West to Hockmeyer Hall**  
Discovery Park Site Development Phase VII  
Purdue ID 1228

